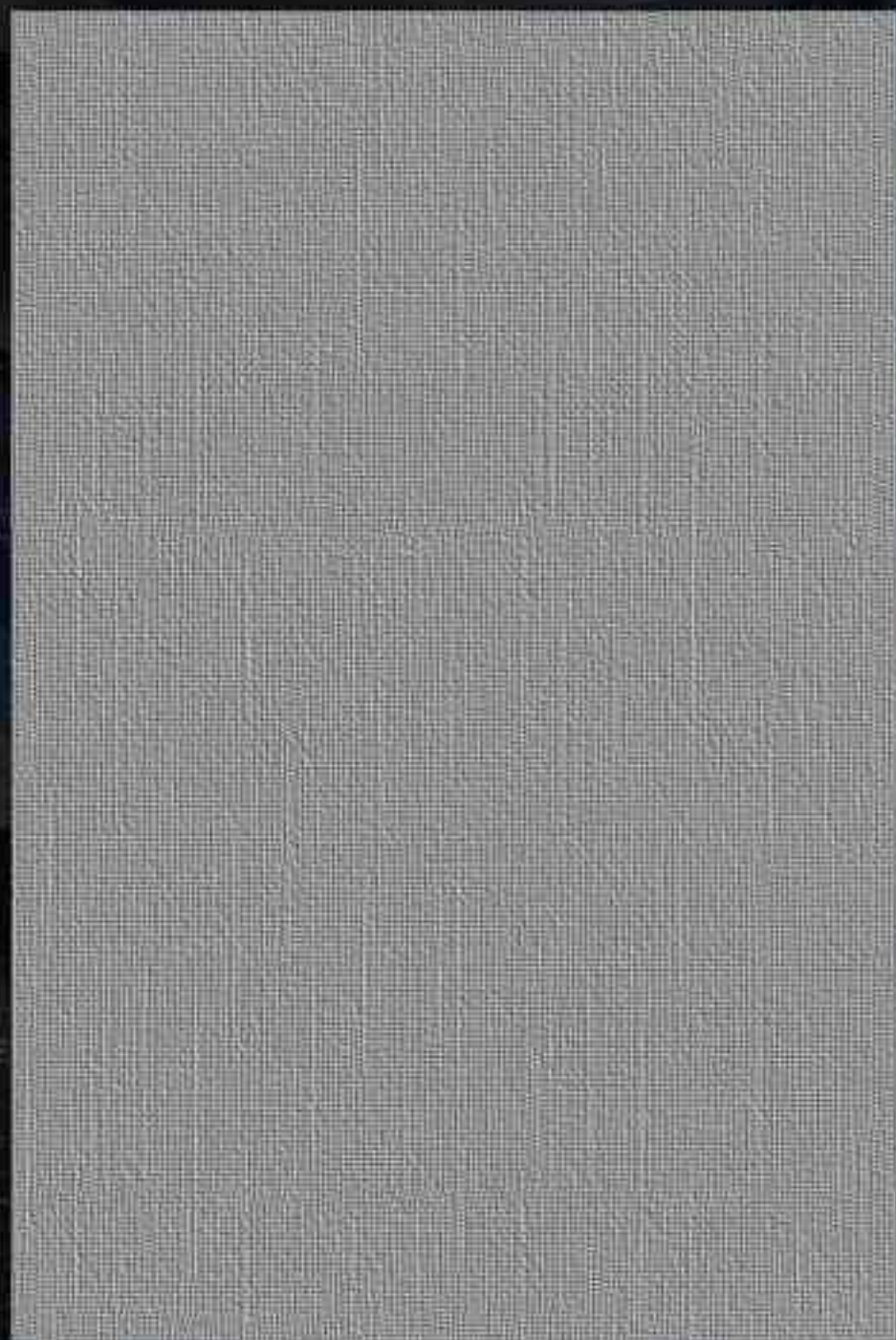




Jupiter series

300x450 mm



All **Designs** in
this **PDF** are Made
in This **Punch**

D.NO:-10740



L



HL1



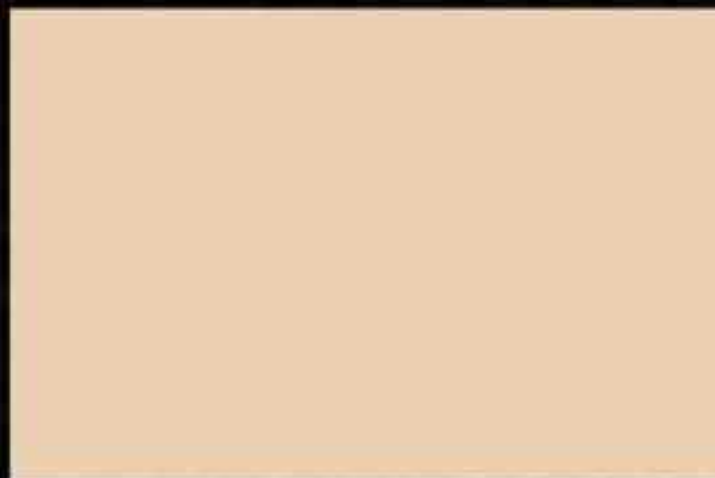
D



450x300mm



D.NO:-10741



L



HL1



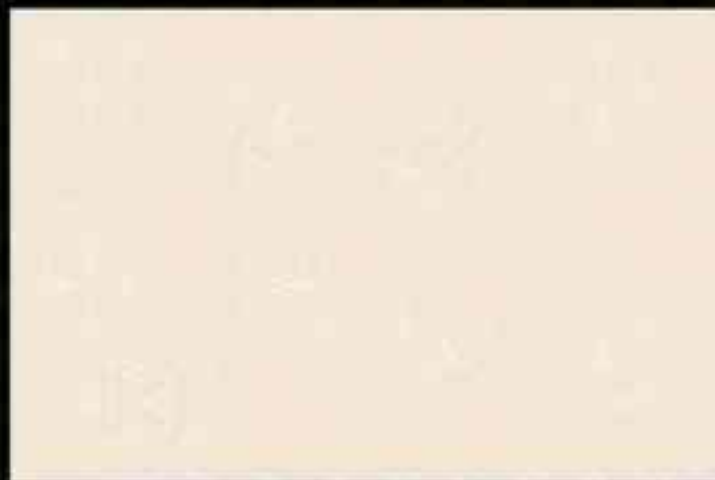
D



450x300mm



D.NO:-10742



L



HL1



D



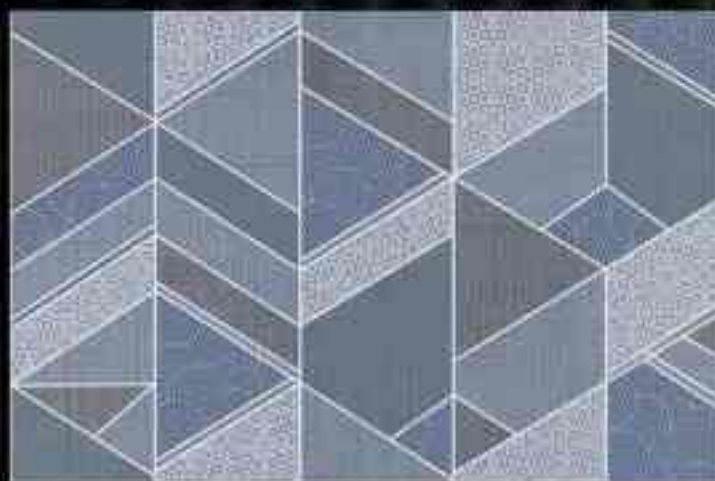
450x300mm



D.NO:-10743



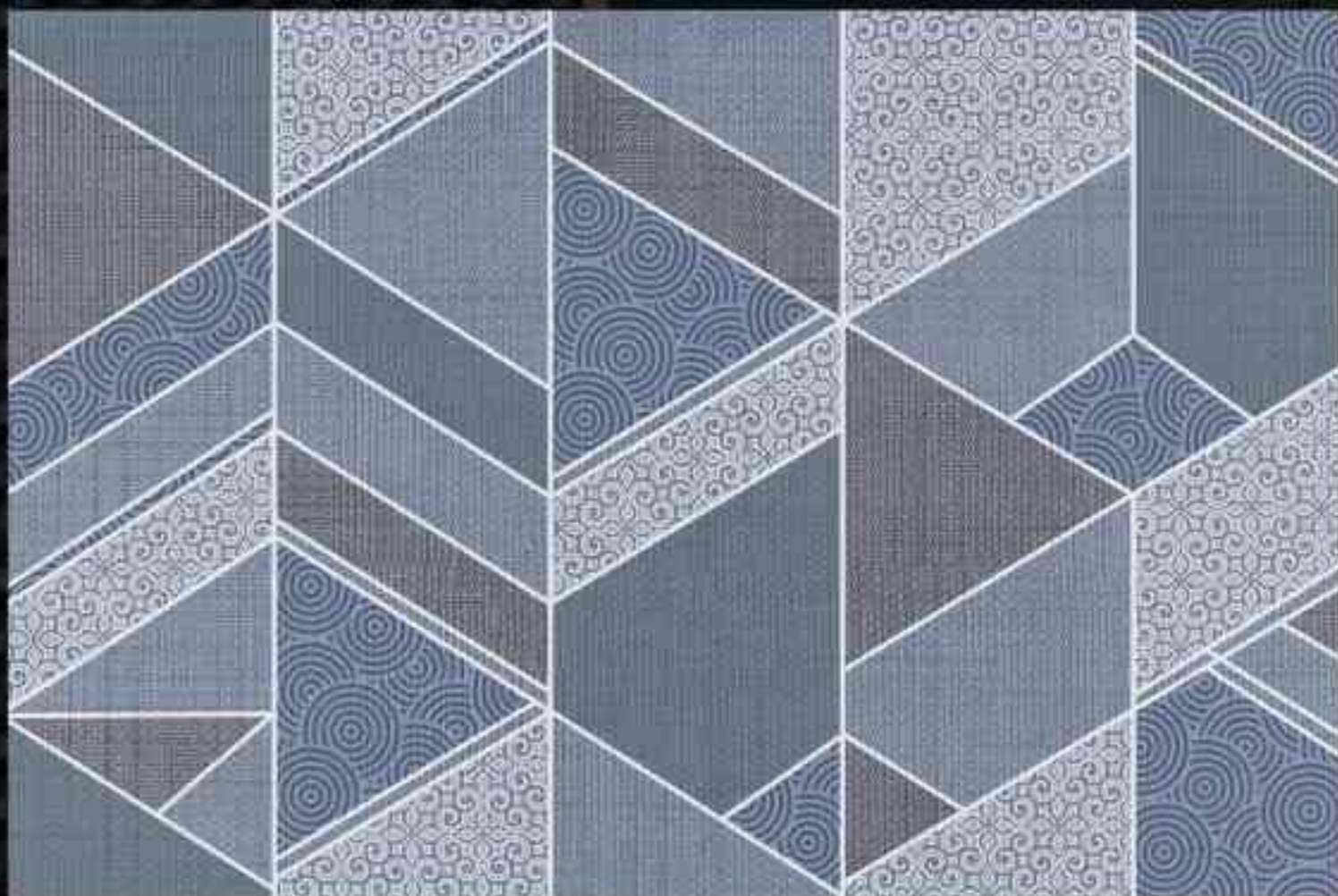
L



HL1



D



450x300mm



D.NO:-10744



L



HL1



D



450x300mm



D.NO:-10745



L



HL1



D



450x300mm



D.NO:-10746



L



HL1



D



450x300mm



D.NO:-10747



L



HL1



D

450x300mm



A dark grey, rectangular floating vanity cabinet. On top of the cabinet, there is a bottle of wine, a glass of wine, and a small white decorative object.

A white, rectangular floating vanity sink with a modern, minimalist faucet. The sink is mounted on a dark grey cabinet.

A vibrant red, branching decorative object, possibly a coral or a modern sculpture, placed on the vanity.

A tall, narrow, rectangular mirror mounted on the wall above the vanity.

Four small, square framed pictures arranged in a 2x2 grid on the wall above the vanity.

A large window with a black frame, providing a view of a lush, green landscape with trees.

A wooden ladder-style shelf with three shelves. The top shelf holds a white towel. The middle shelf holds a small brown ceramic vase. The bottom shelf holds two small bottles and a small white container.

D.NO:-10748



L



HL1



D



450x300mm



D.NO:-10749



L



HL1



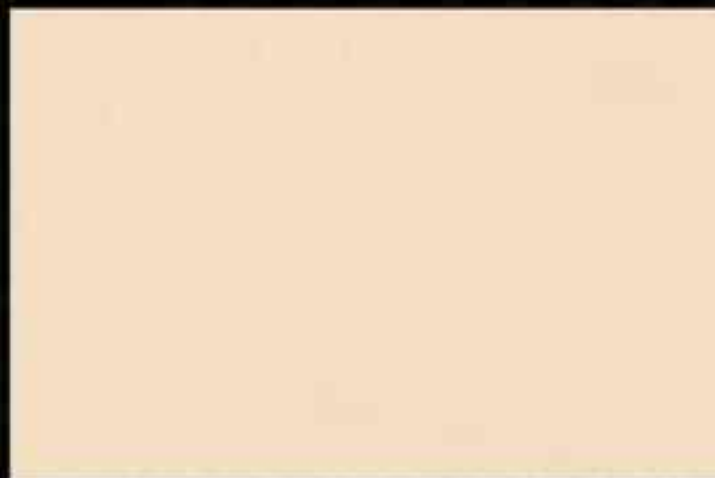
D



450x300mm



D.NO:-10750



L



HL1



D

450x300mm



D.NO:-10751



L



HL1



D



450x300mm



D.NO:-10752



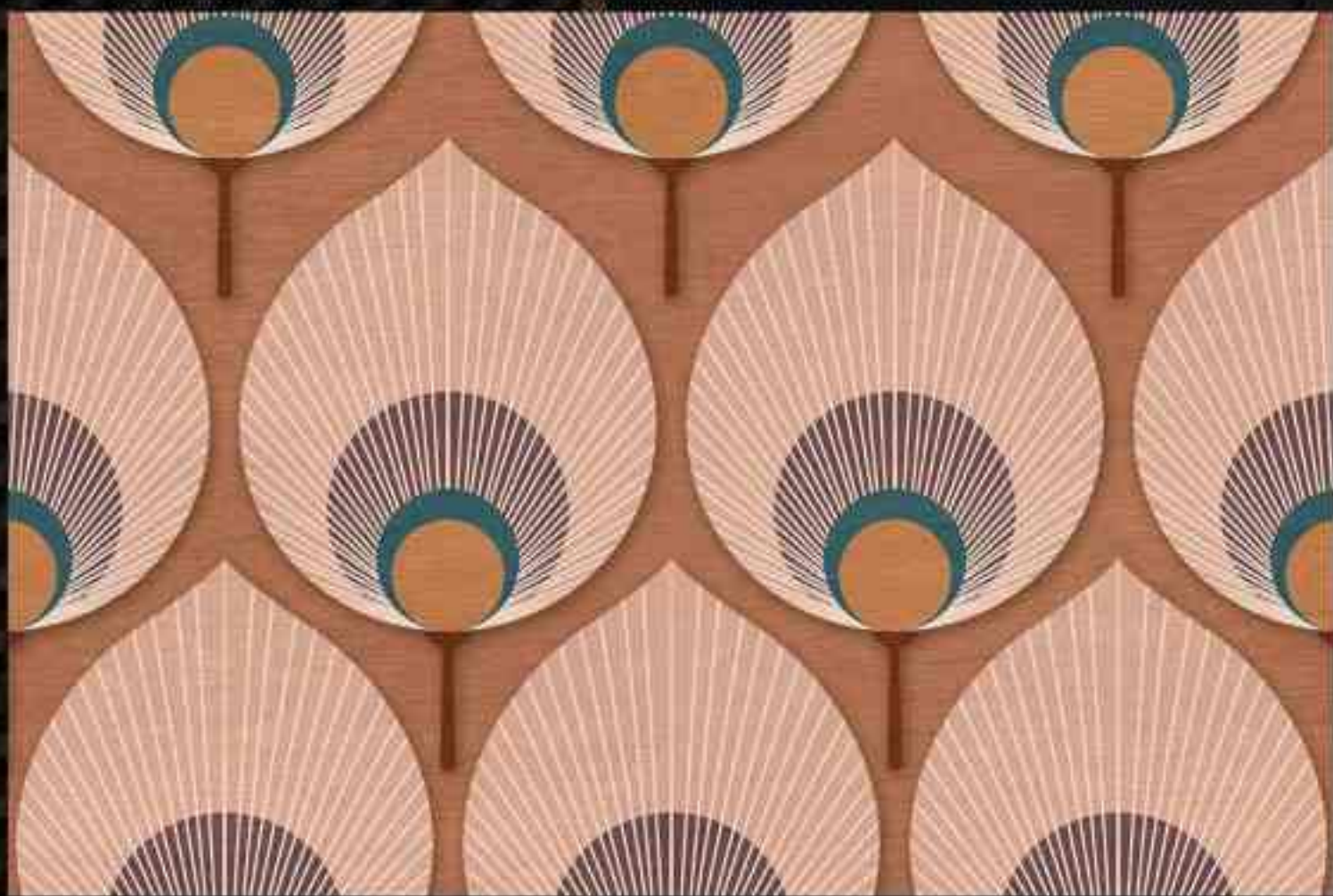
L



HL1



D



450x300mm



D.NO:-10753



L

HL1

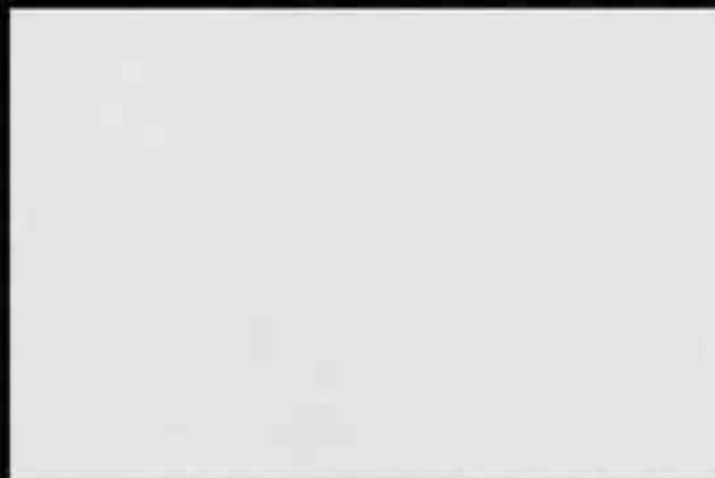
D



450x300mm



D.NO:-10754



L



HL1



D



450x300mm



D.NO:-10755



L



HL1



L

450x300mm



D.NO:-10756



L



HL1



L



450x300mm



D.NO:-10757



L



HL1



L



450x300mm



D.NO:-10758



L



HL1



L

450x300mm



D.NO:-10759



L



HL1



L



450x300mm



D.NO:-10760



L



HL1



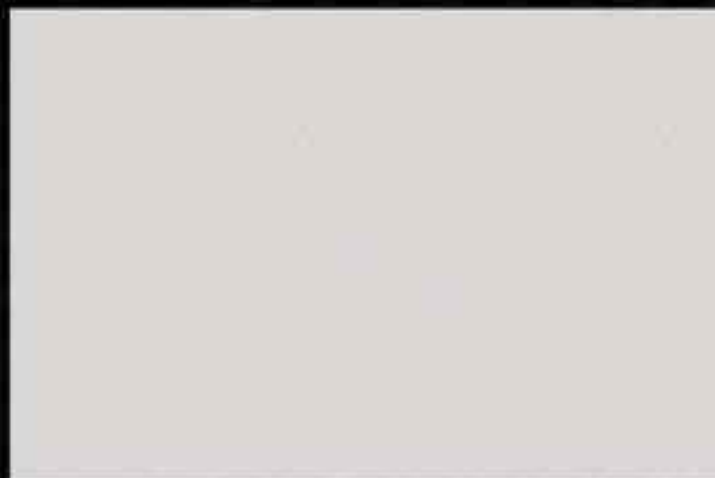
D



450x300mm



D.NO:-10761



L



HL1



D



450x300mm



D.NO:-10762



L



HL1



D



450x300mm



D.NO:-10763



L



HL1



D

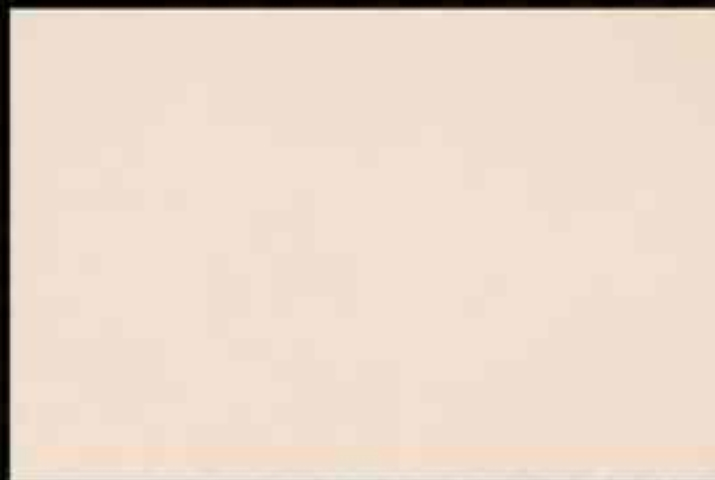


450x300mm



1777
RHINOCERVS
H

D.NO:-10764



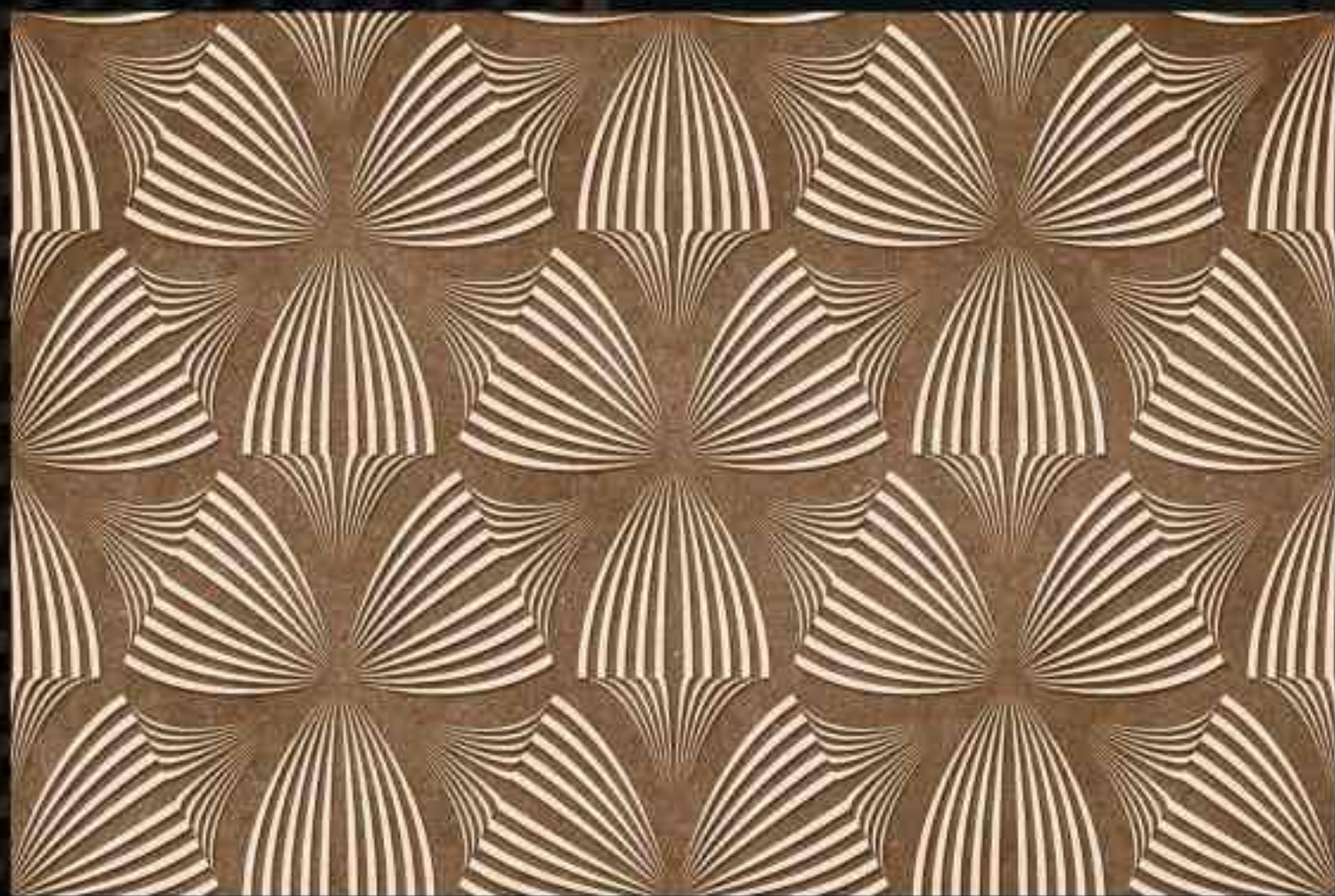
L



HL1



D



450x300mm



D.NO:-10765



L



HL1



D



450x300mm



D.NO:-10766



L



HL1



D

450x300mm



D.NO:-10767



L



HL1



L

450x300mm



**Le sac
en papier mercl**

Ce sac est fabriqué
à partir de papier recyclé
100% naturel.
Densité épaisse 180g
sans blanc, biodégradable
et sans danger.
Contenance: 23 litres
100% recyclable
Ne le jetez pas
dans les poubelles.

D.NO:-10768



L



HL1



D



450x300mm



D.NO:-10769



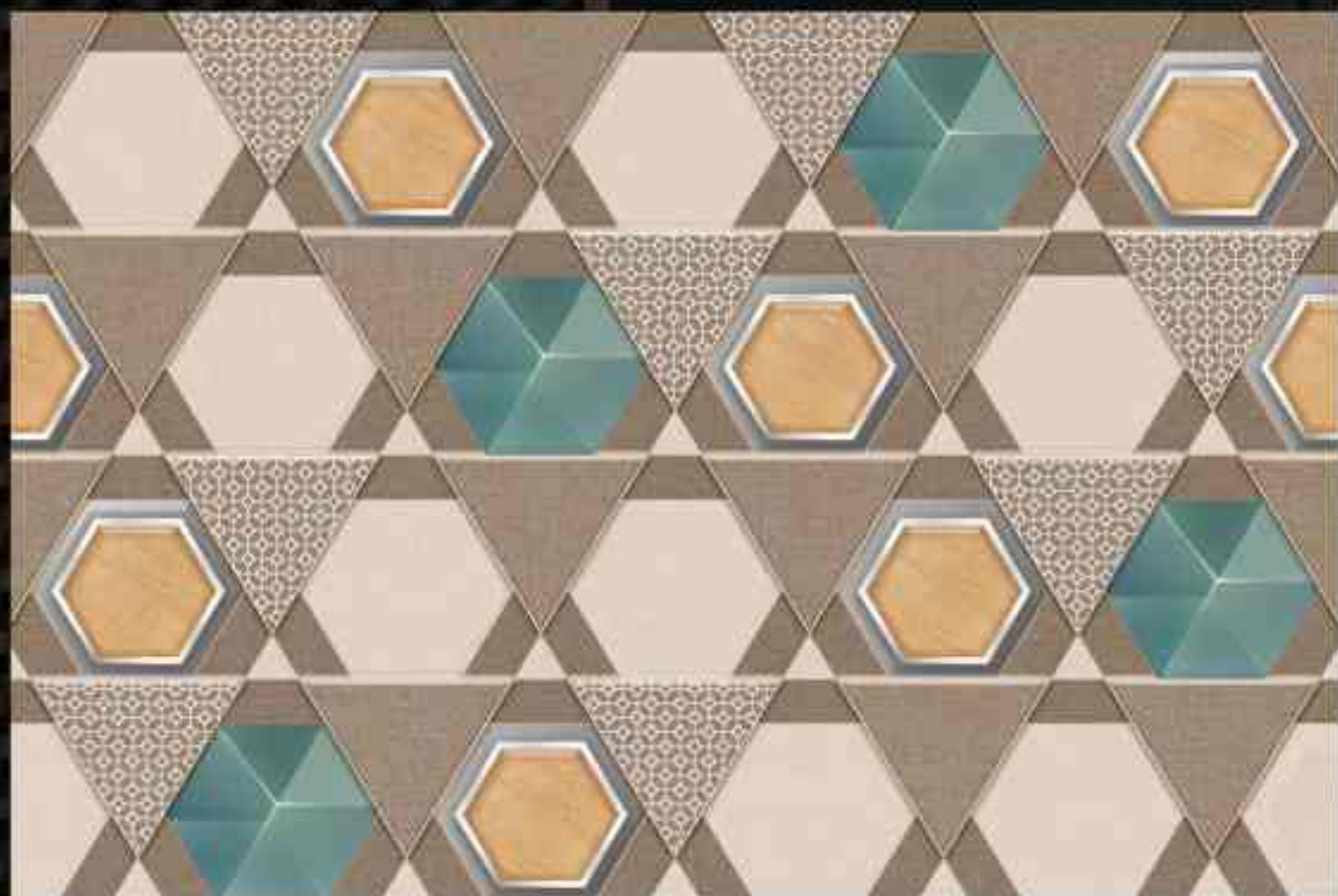
L



HL1



D



450x300mm



D.NO:-10770



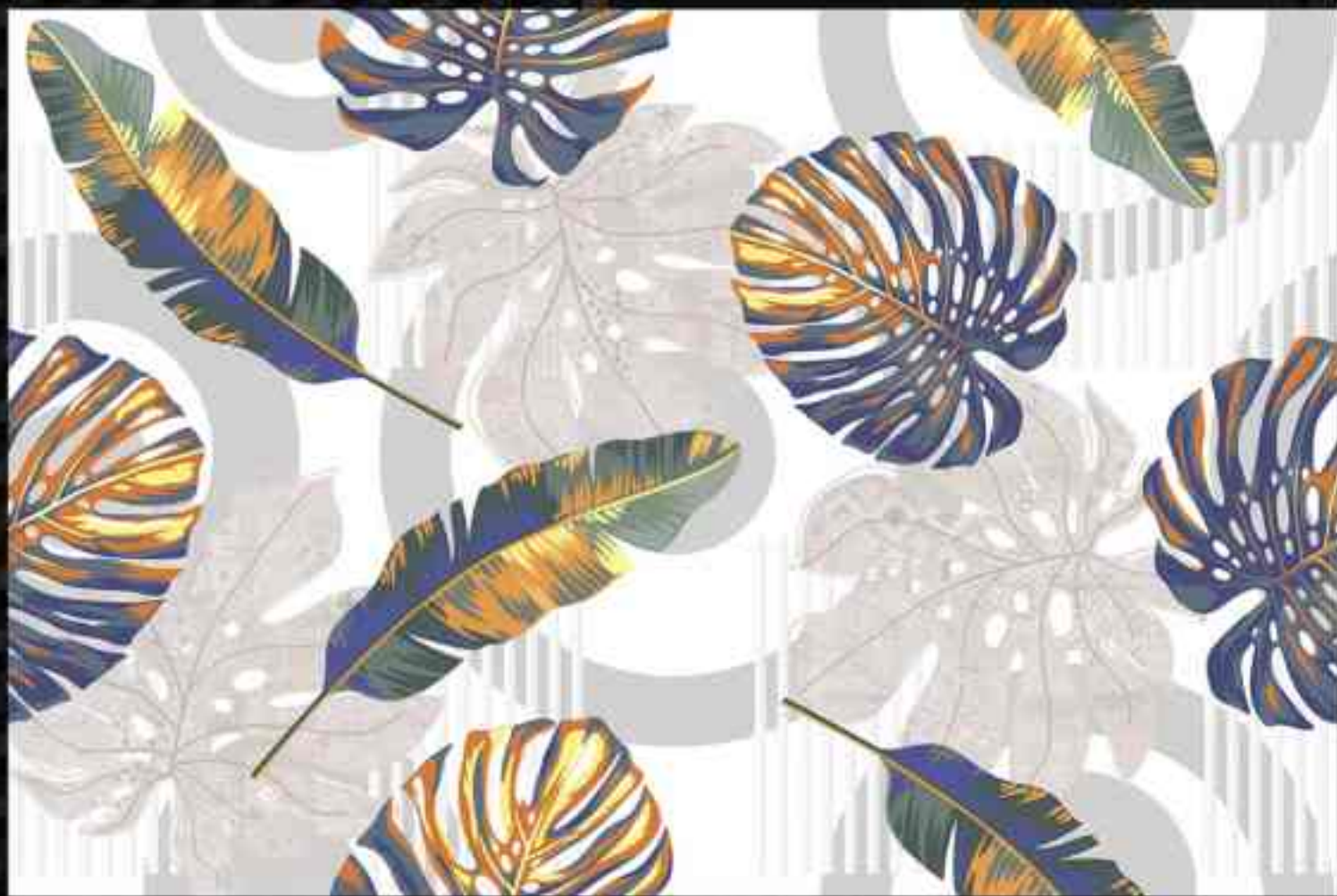
L



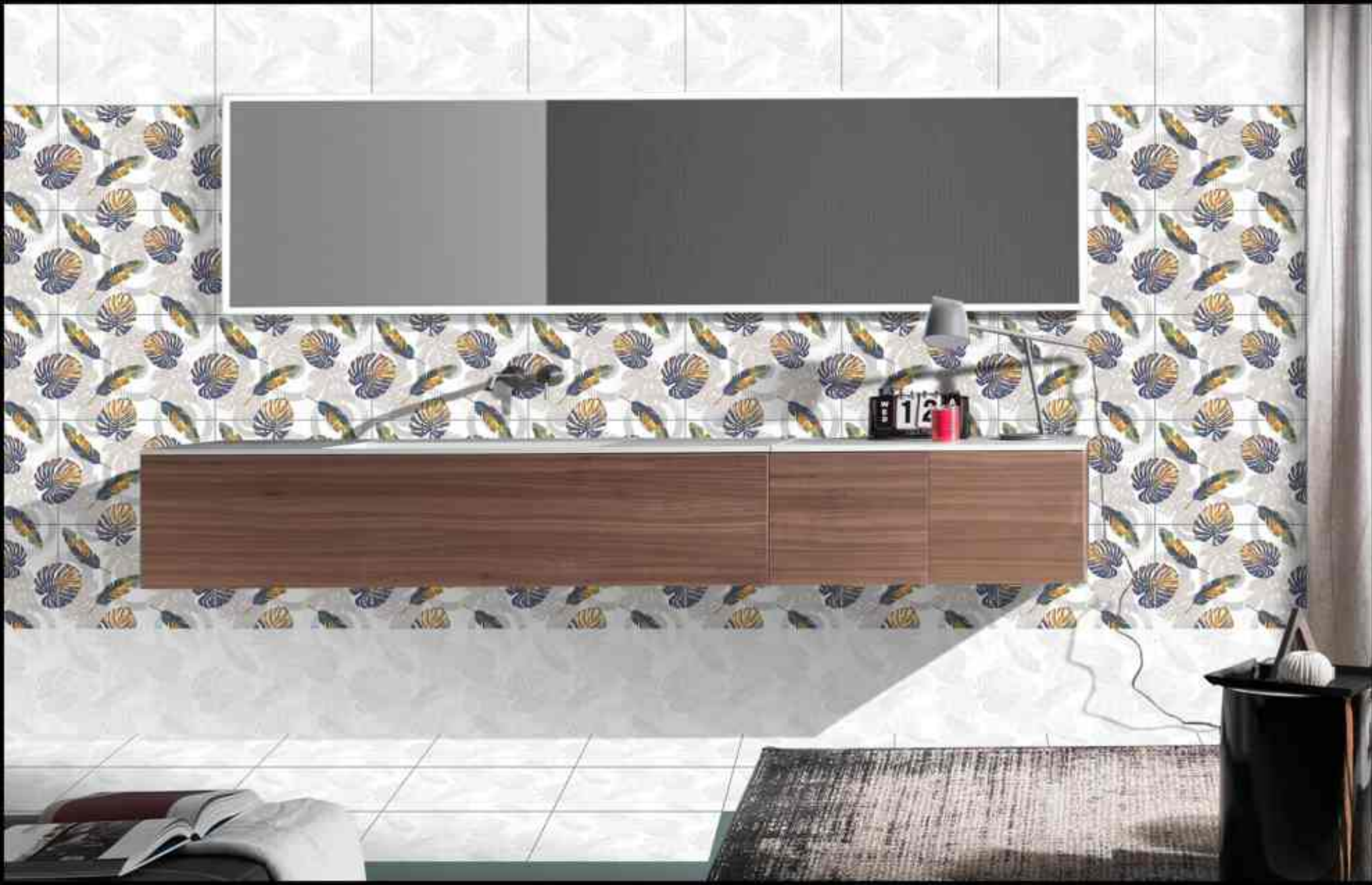
HL1



L



450x300mm



D.NO:-10771



L



HL1



L



450x300mm



D.NO:-10772



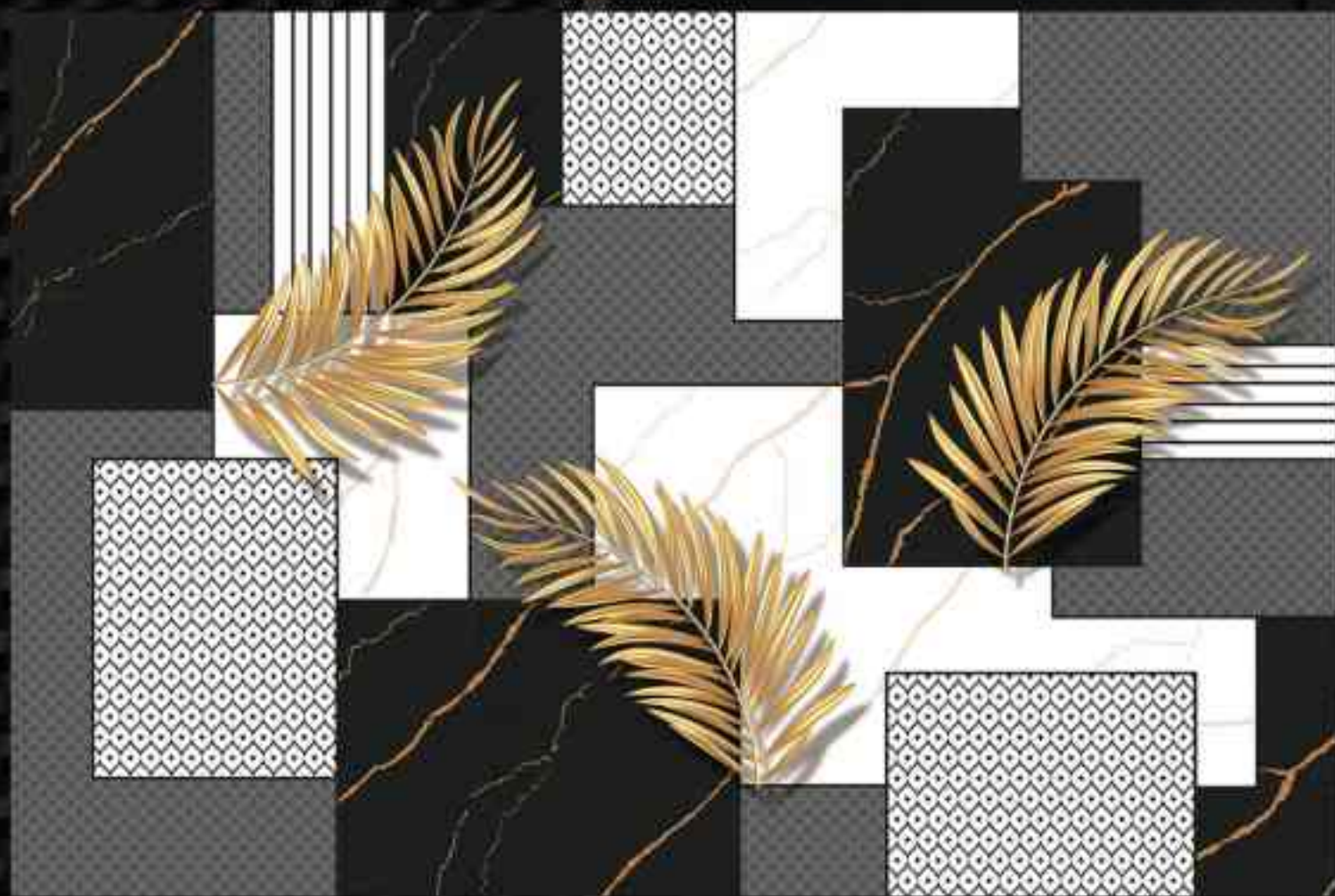
L



HL1



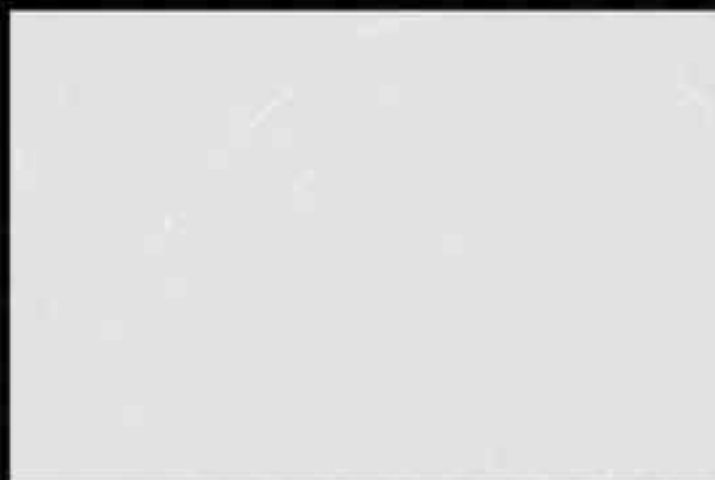
D



450x300mm



D.NO:-10773



L



HL1



D

450x300mm



D.NO:-10774



L



HL1



L



450x300mm



D.NO:-10775



L



HL1



L

450x300mm



D.NO:-10776



L



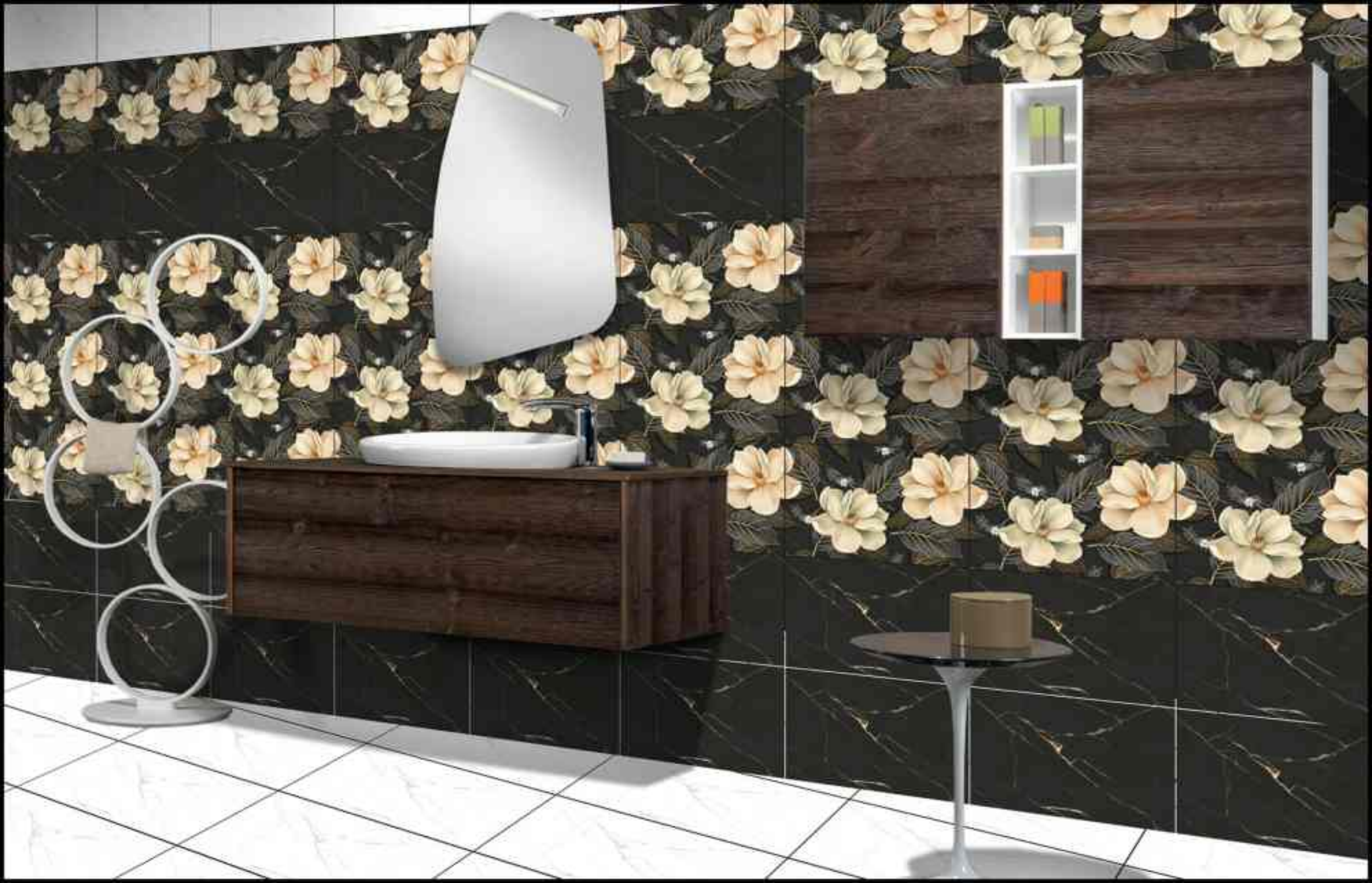
HL1



D



450x300mm



L

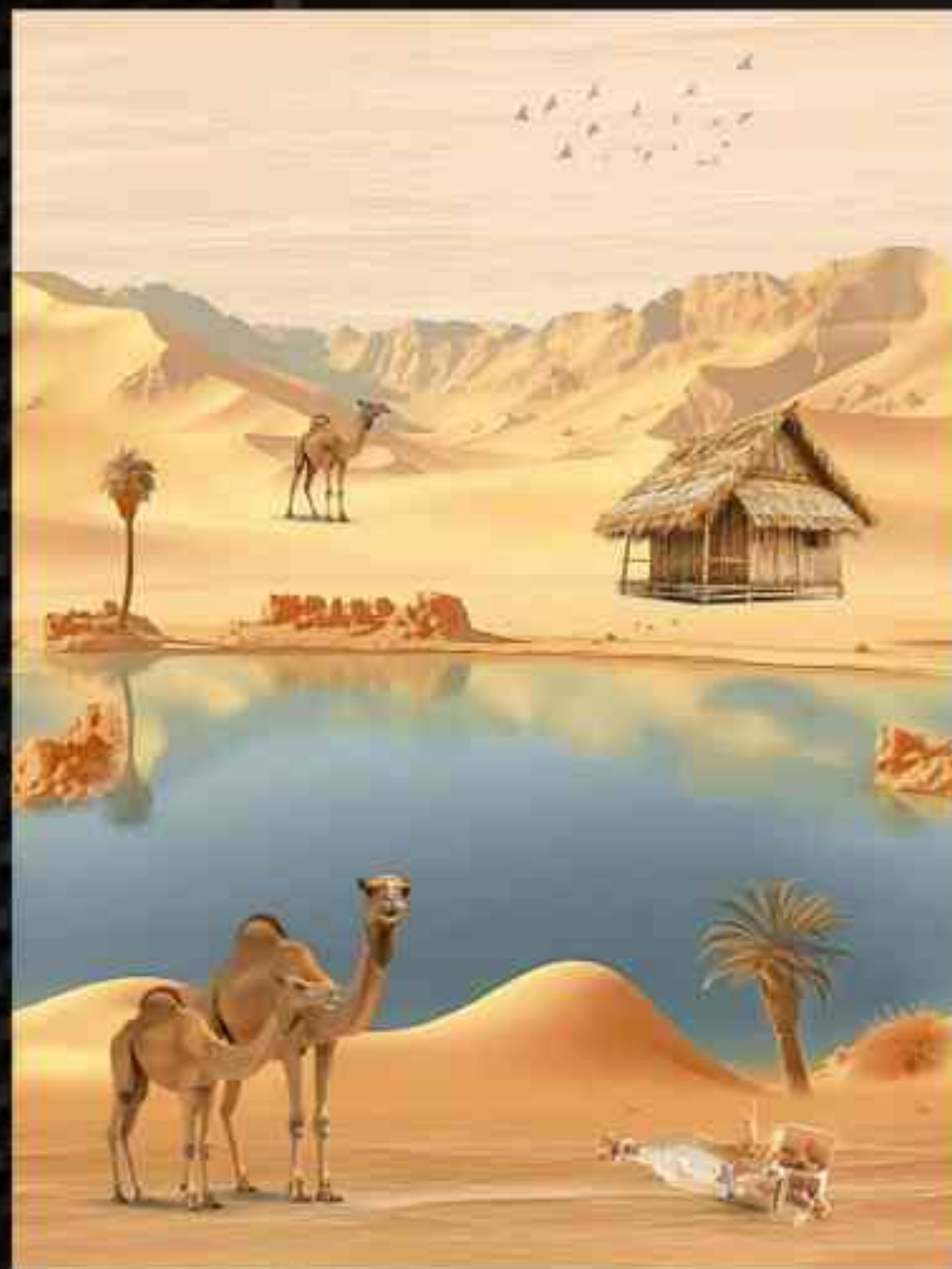


HL1A



HL1B

D



450x300mm



D.NO:-10778

L

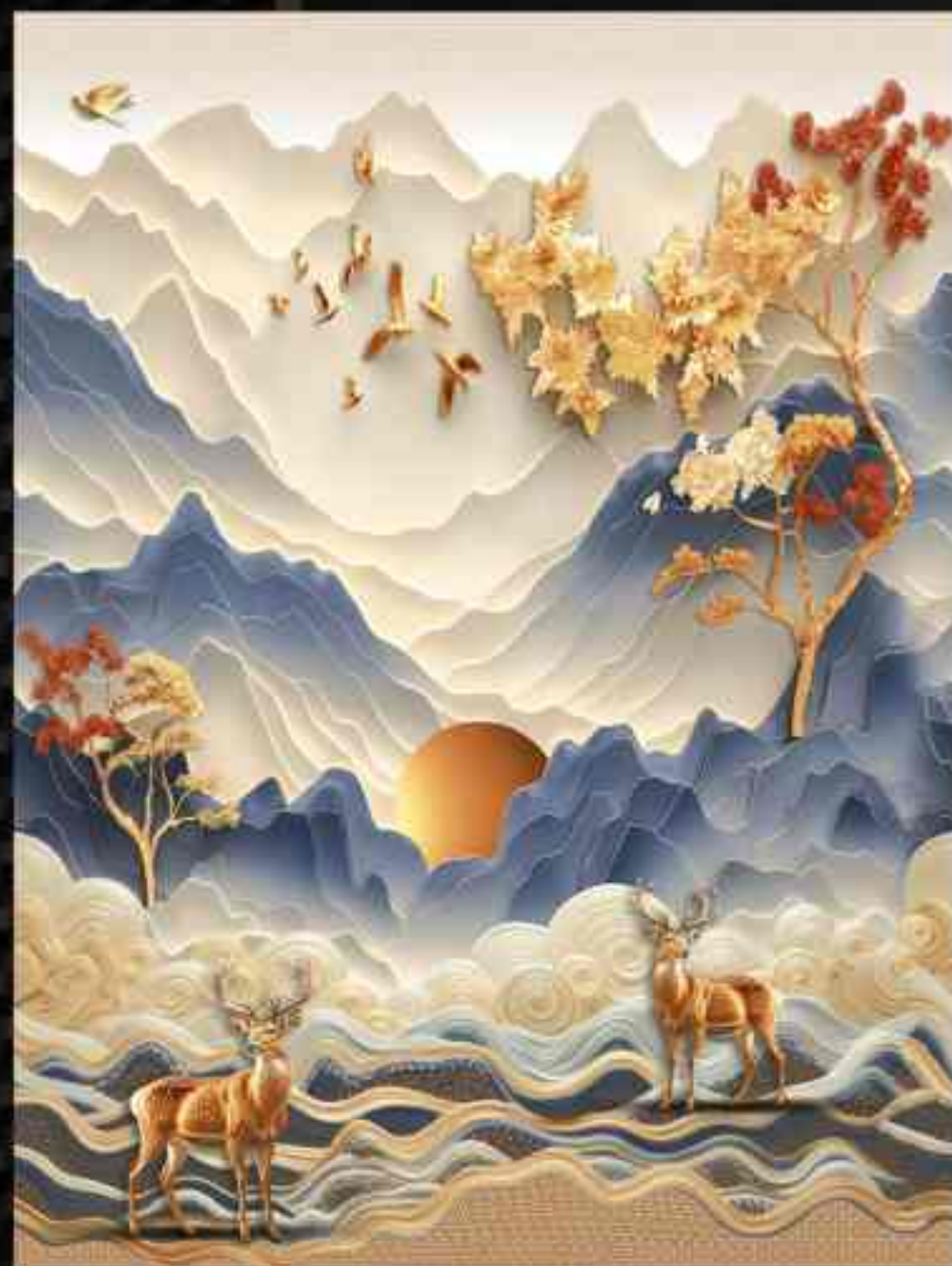


HL1A



HL1B

D



450x300mm



D.NO:-10779

L

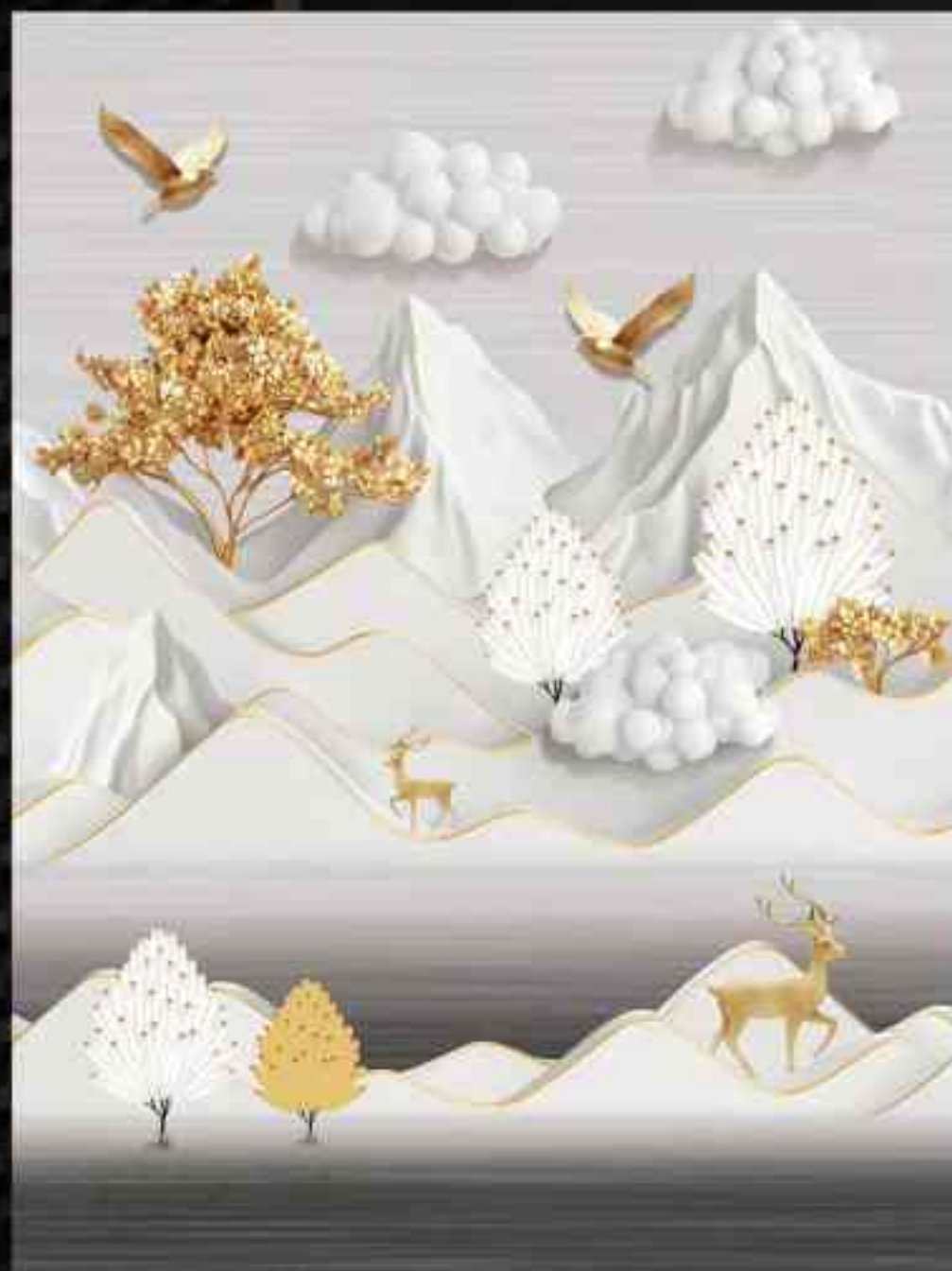


HL1A



HL1B

D



450x300mm



D.NO:-10780

L

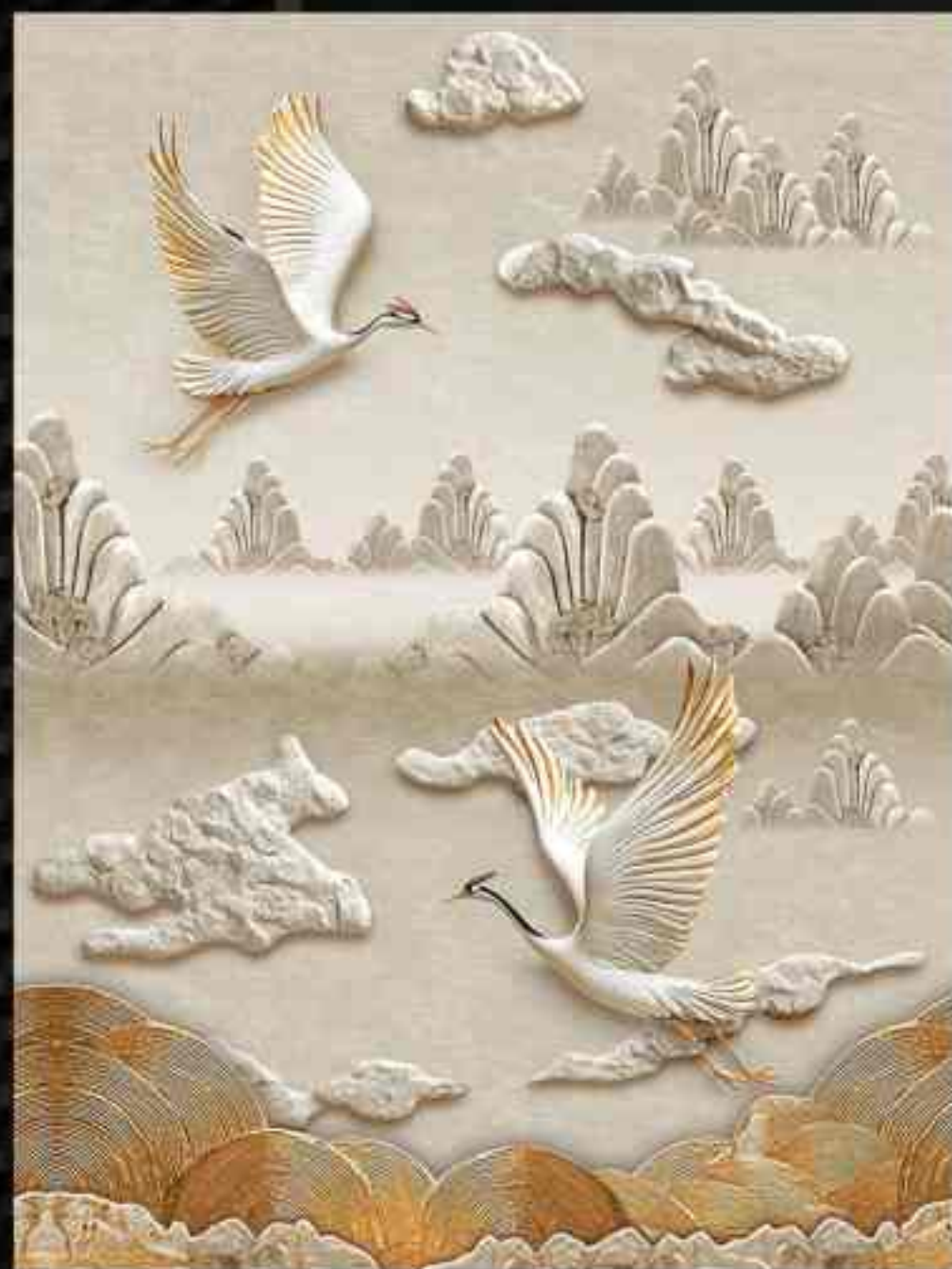


HL1A



HL1B

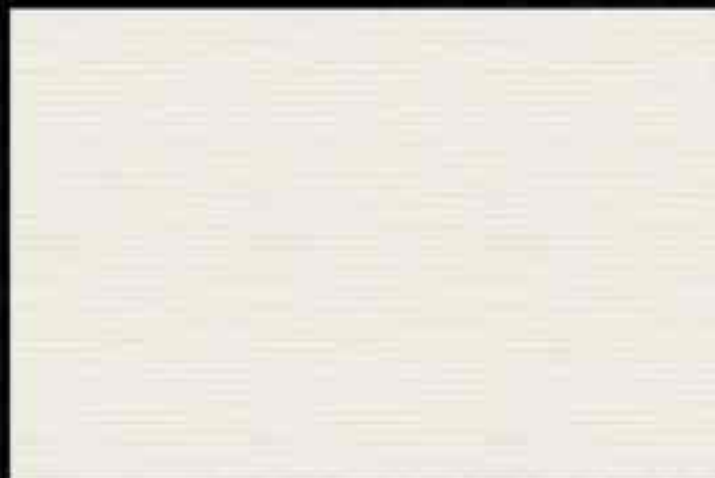
L



450x300mm



D.NO:- 10864



L



HL1



D



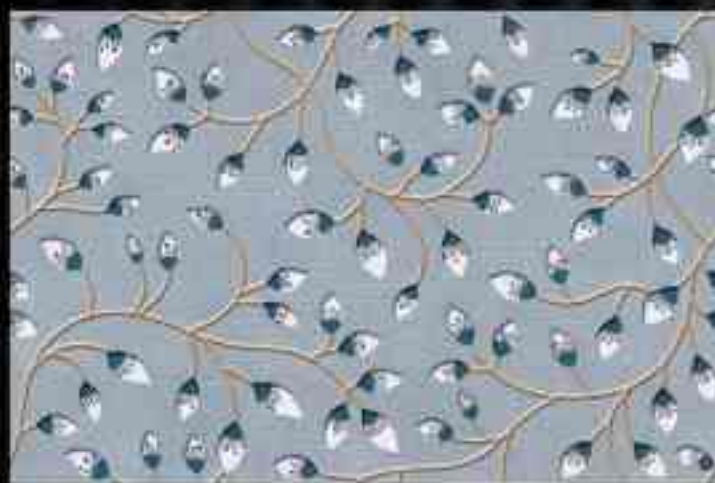
450x300mm



D.NO:- 10865



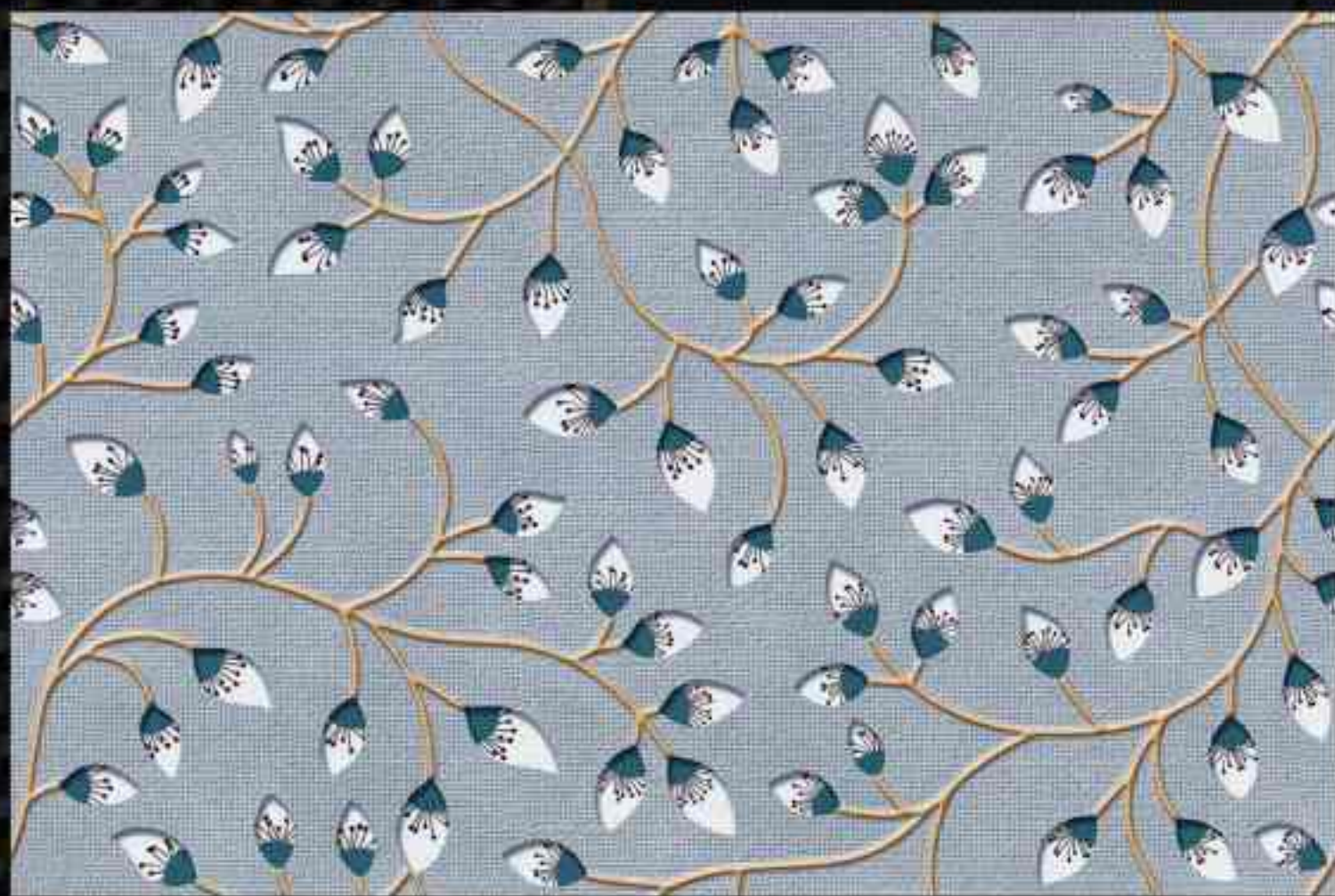
L



HL1



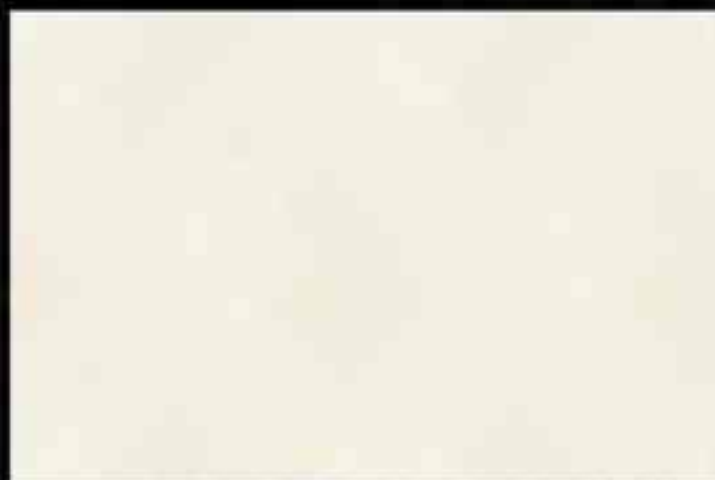
D



450x300mm



D.NO:- 10866



L



HL1



D



450x300mm



D.NO:- 10867



L



HL1



D



450x300mm



D.NO:- 10868



L



HL1



D

450x300mm



D.NO:- 10869



L



HL1



L

450x300mm



D.NO:- 10870



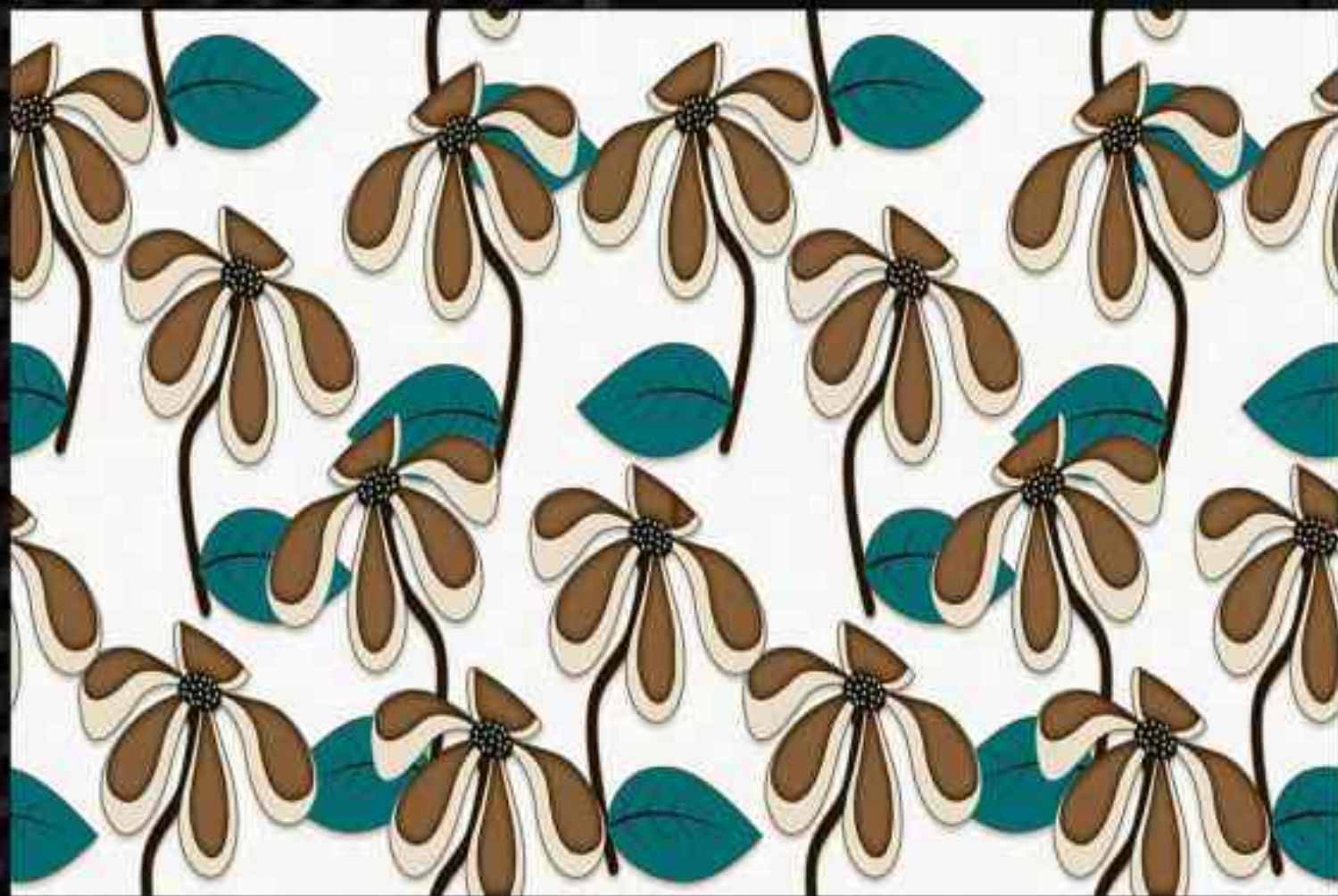
L



HL1



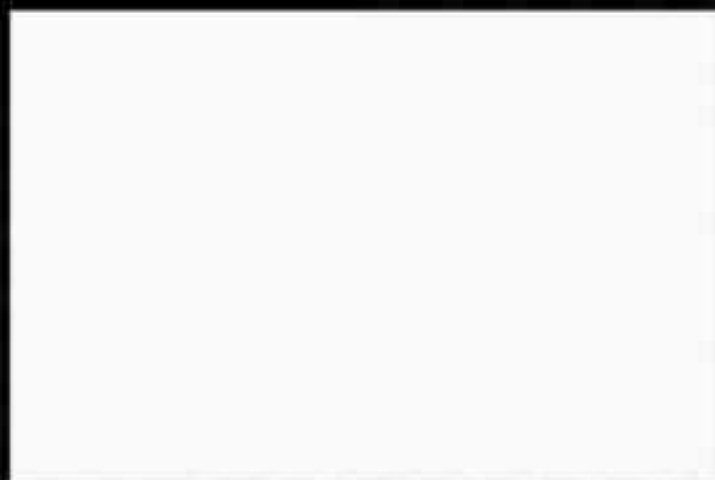
D



450x300mm



D.NO:- 10871



L



HL1



D



450x300mm



D.NO:- 10872



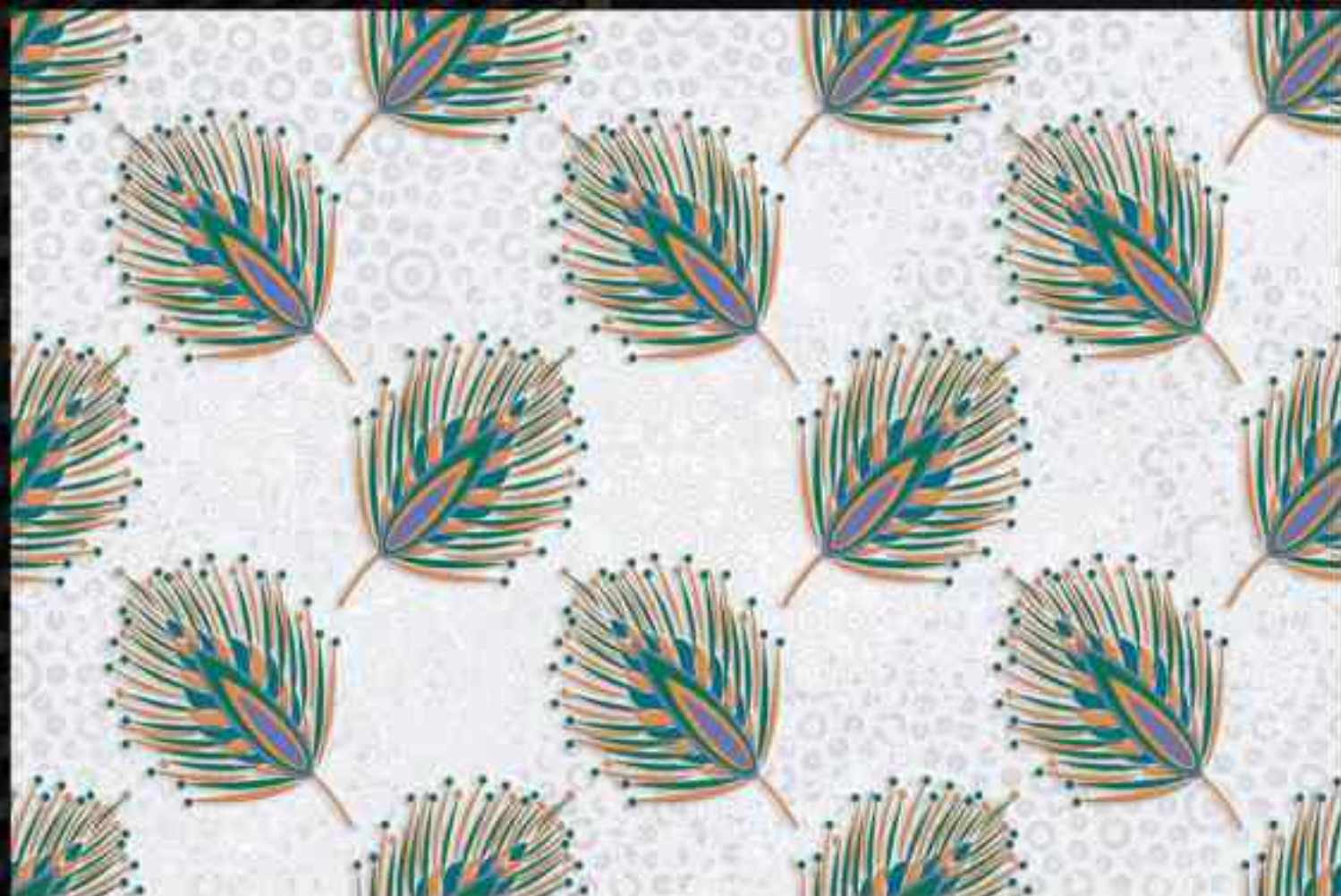
L



HL1



L



450x300mm



D.NO:- 10873



L



HL1



D

450x300mm

