

The logo for SAGAR, featuring the word "SAGAR" in a bold, red, sans-serif font. The letters are contained within a white rectangular box with a thin black border. A registered trademark symbol (®) is located at the top right of the box. The background of the entire page is dark blue with faint, stylized white lines representing gears and circuitry.

SAGAR[®]

An ISO 9001:2015 Company



SINCE 1975
ENGINEERING
EXCELLENCE

Manufacturer's of All Types of
C.I Casting & S.G Iron Casting

- 
- ◉ Mechanical Engineering
 - ◉ Hydraulic Casting
 - ◉ Agricultural Engineering
 - ◉ Construction Machinery
 - ◉ Pump Manufacturing
 - ◉ Fittings
 - ◉ Electrical Engineering
 - ◉ Tool Making
 - ◉ Customer Specific Casting

ABOUT US

Sagar Foundry Pvt. Ltd. was established in **1975** and has since been a leader in **Cast Iron (C.I.) and Spheroidal Graphite (S.G.) Iron castings**.



Over the past four decades, Sagar Foundry has earned a reputation for delivering reliable, durable, and innovative products to clients across India and abroad. With a state-of-the-art manufacturing facility and a commitment to continuous improvement, we remain at the forefront of the casting industry, meeting the demands of an ever-evolving market.

Achieve Market Success with High Flexibility, Cost Efficiency & Consistent Productivity.

At Sagar Foundry, we are your trusted partner from the initial design phase to reliable series production. Our expertise, built over years of experience, is complemented by modern, efficient technologies and state-of-the-art facilities.

We offer tailored solutions to meet your specific needs—whether it’s intricate custom castings or large-scale production at competitive prices. Our team provides expert guidance on advanced materials, cast part design, surface finishing, testing methods, and more, ensuring you maximize the full potential of casting technology right from the development stage.

Partner with a foundry that blends tradition with innovation, delivering precision and reliability in every casting.

Let’s build the future together—challenge us!

**Unique range of opportunities:
1 kg - 450 kg**

- **Certifications:** ISO 9001:2015 (TUV Rheinland)
- **Production Capacity:** 4,300 MT annually
- **Dimensional Capacity:** 700*600*600(Green Sand), Open Capacity (No-bake)
- **Materials:** All grades of Cast Iron & Ductile Iron



As Flexible as Your Expectations

At Sagar Foundry, we cater to a diverse range of casting requirements, from intricate filigree components to large-scale cast parts. Whether you need Spheroidal graphite iron and Gray cast iron, our advanced manufacturing capabilities ensure precision and reliability. With a weight range of 1 kg to 450 kg, we deliver top-quality castings to meet your exact specifications.



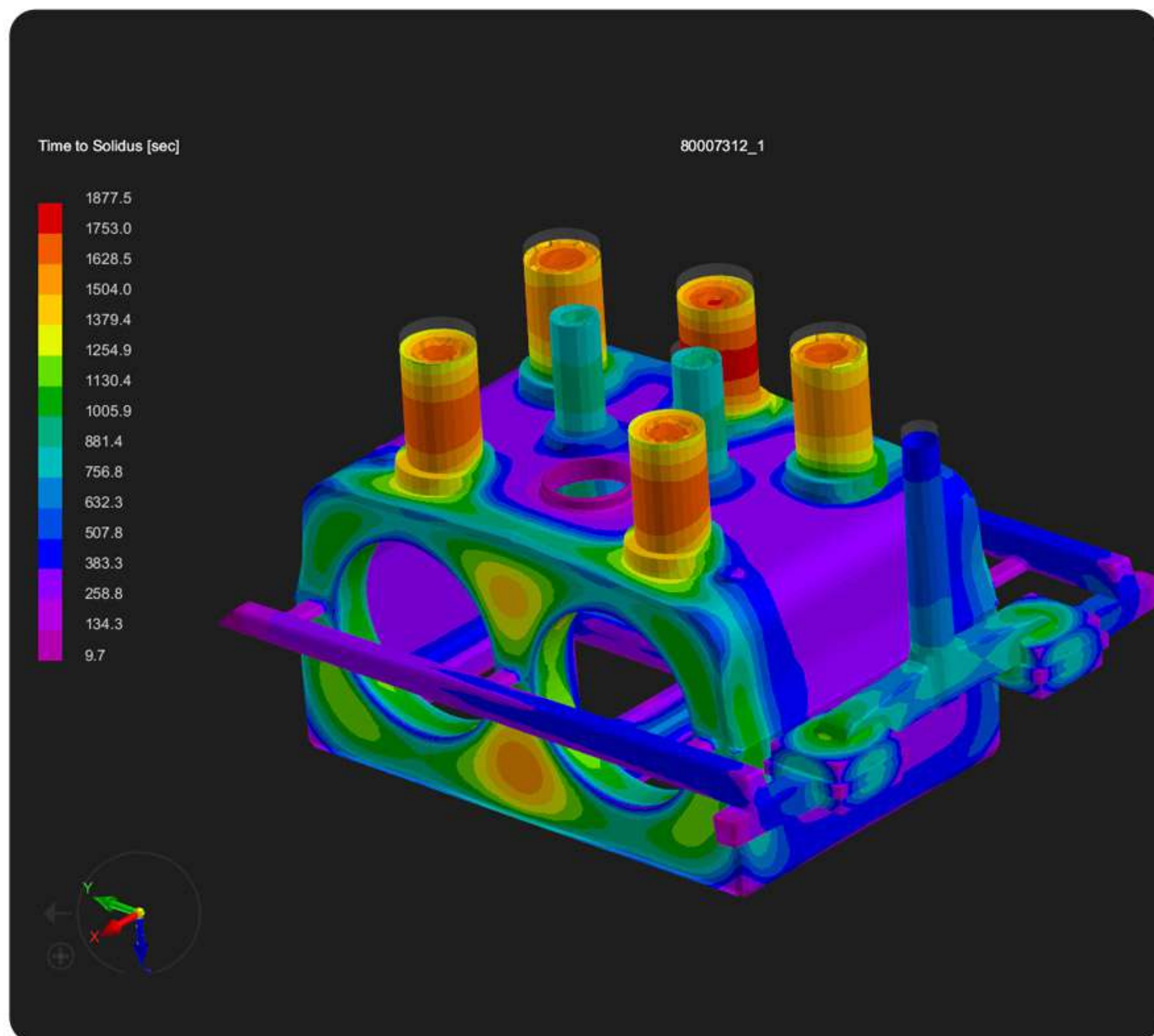
State-of-the-Art Technical Capabilities

- Fully Automatic Green Sand Reclamation Plant with ARPA-450 Jolt squeeze molding line
- Fully Automatic No-Bake Sand Reclamation Plant with a 6-ton-per-hour continuous mixer
- Mold Sizes:
 - Green Sand: 700 x 600 x 600 mm
 - No-Bake: Open Capacity
- Two Induction Melting Furnaces (500 kg and 300 kg)
- Core Making Shop equipped with 3 core shooters using the cold box process

With cutting-edge technology and a commitment to excellence, we ensure that every casting meets the highest quality standards.

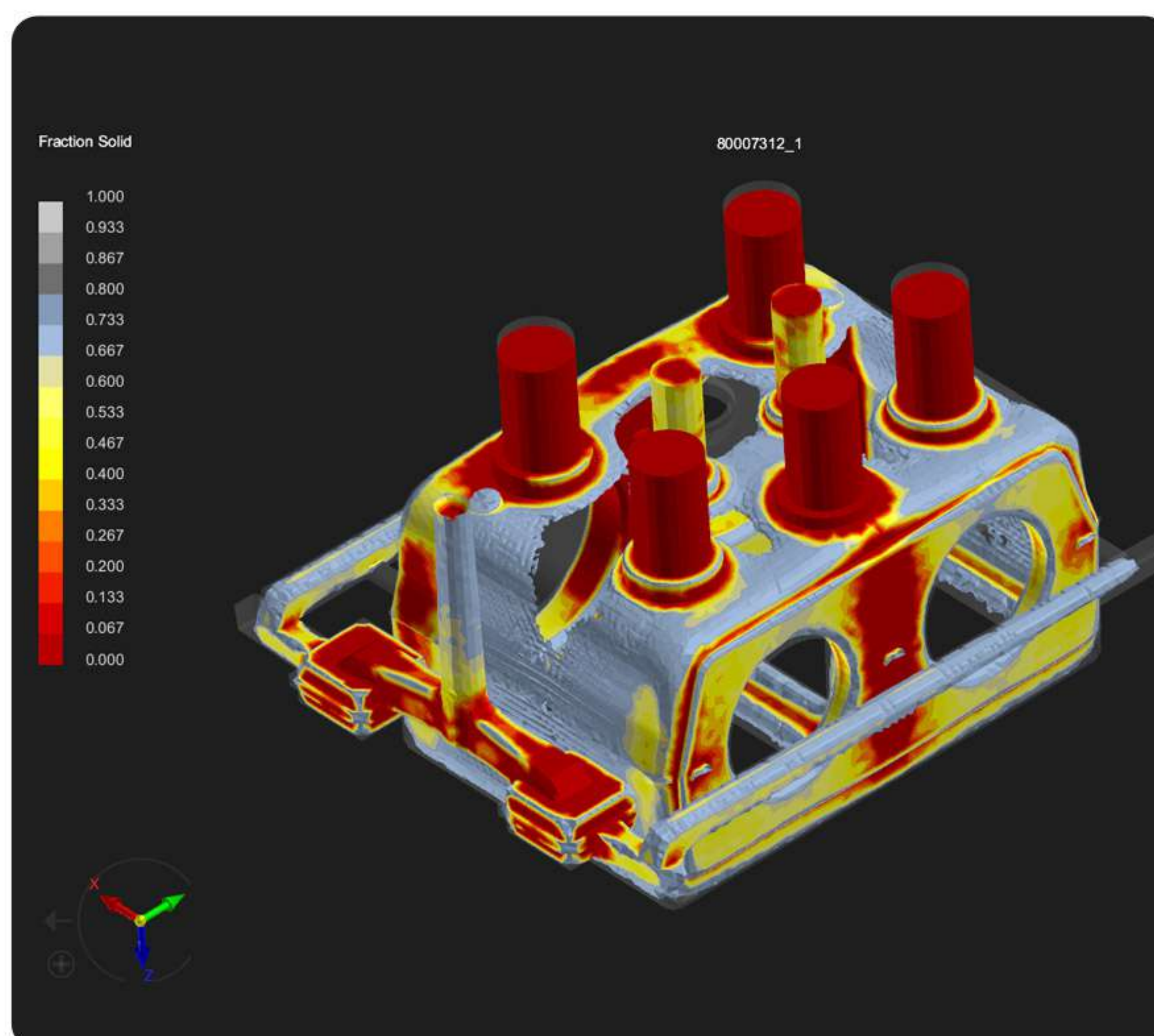


Bringing Your Ideas to Life with Precision Casting



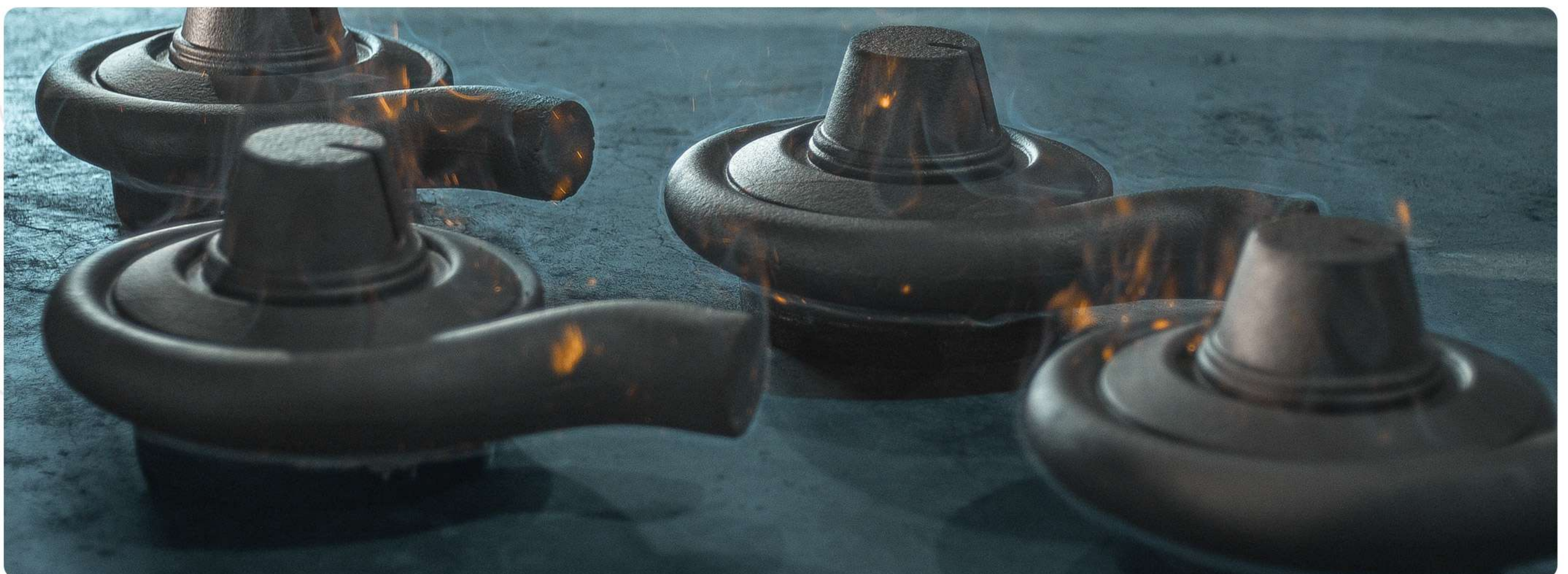
We transform your concepts into perfectly shaped and high-quality castings. From expert design consultation to the production of optimized casting geometries, we ensure every detail is tailored to your requirements.

Our skilled operations team utilizes advanced design and simulation tools to create castings with geometries optimized for seamless production. By integrating casting requirements from the start, we enhance process stability, minimize defects, and ensure consistent quality.



Our pattern-making department plays a crucial role in shaping your designs with unmatched precision. Using aluminum, copper, and plywood, we craft highly accurate pattern equipment, guaranteeing dimensional accuracy and a consistent number of castings.

With a focus on innovation and excellence, we deliver castings that meet the highest industry standards—shaped to perfection, engineered for reliability.



Ensuring Excellence Through Rigorous Quality Management

Implement comprehensive quality checks at every stage of production to ensure consistently high-quality castings.

Our commitment to quality has been recognized through continuous certification for the manufacturing, processing, and sale of castings and pattern equipment by TUV Rheinland (INDIA) Pvt. Ltd.



Cutting-Edge Laboratory for Precision Testing

Our state-of-the-art laboratory is equipped with advanced testing technology, ensuring stringent material testing, quality assurance, acceptance testing, and procedure qualification. Our robust quality control system guarantees first-class castings with uncompromised reliability.

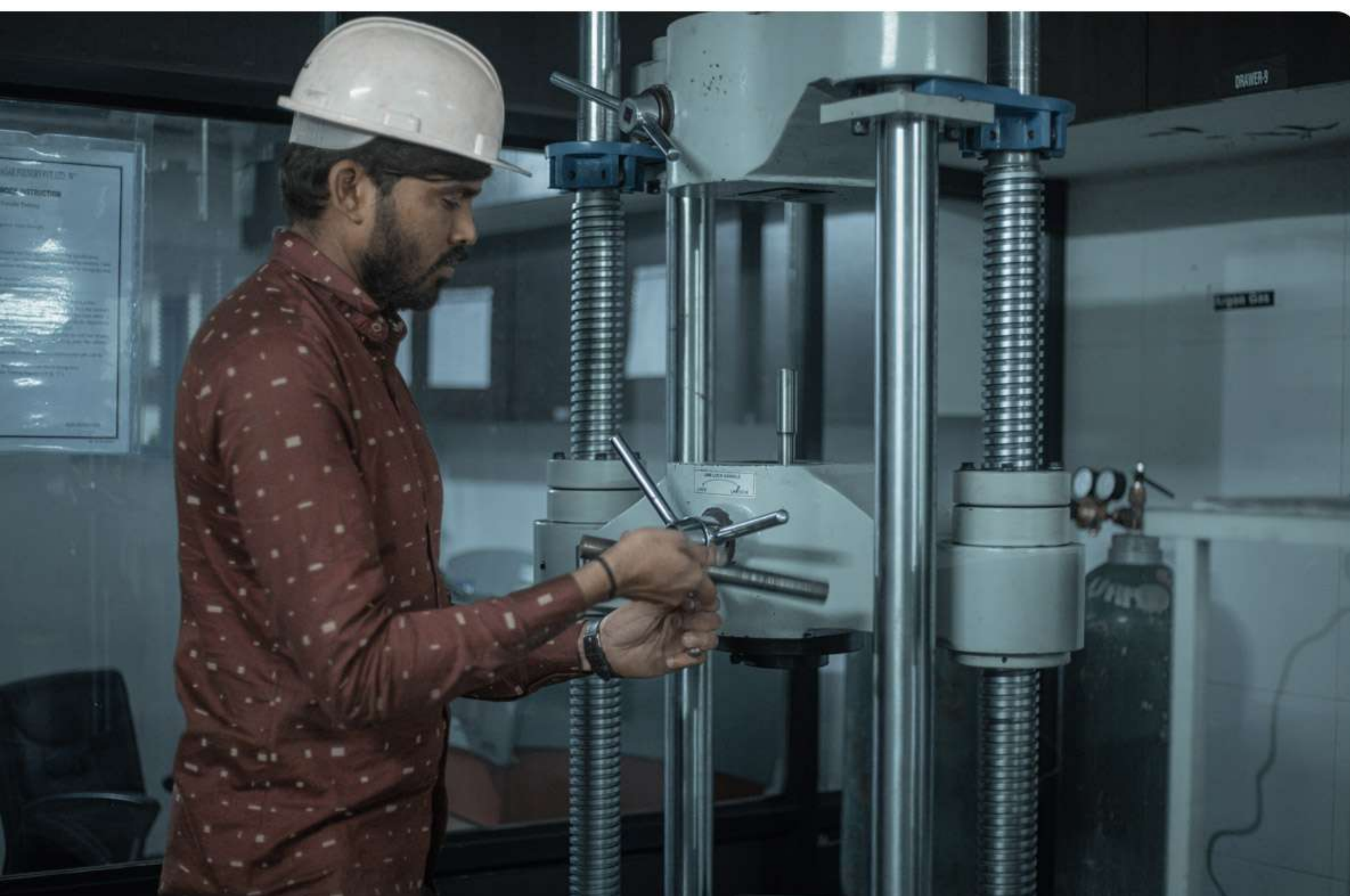
In-House Testing Capabilities:

- Emission Spectrometry
- Hardness Testing
- Thermoanalysis
- Universal Compression-Tension Testing
- Micro Structure Analysis
- Sand Testing

Outsourced Testing Services:

- Ultrasonic Inspections
- Magnetic Particle Inspection
- Dye Penetrant Examinations
- Radiographic Testing (in collaboration)
- 3D Measuring Machine

With a commitment to precision, durability, and reliability, we ensure that every casting meets the highest industry standards.



Everything from the scrap to complex finishes part, we got you covered



Precision Machining & Casting

Our dedicated machining division has enabled us to perform complex finish machining and casting finishing within our own facility, ensuring superior quality and faster turnaround times.

Our Machining Capabilities:

MACHINE	MAKE	TABLE SIZE
HMC	HÜLLER HILLE	500*500
VMC	JYOTI	1000*530
VMC	JYOTI	1000*530
TURNING	JYOTI	Ø 200 CHUCK



With state-of-the-art equipment and a skilled team, we ensure precision, efficiency, and reliability in every machined component.



Ensuring Production Reliability Through Targeted Quality Assurance



At Sagar Foundry, we meet customer demands for ready-to-install components and complete assembly solutions with precision and efficiency.

Our services extend beyond machining, offering comprehensive surface protection for both raw and finished parts through advanced spray painting techniques.

With a strong network of trusted partners, we can expand our machining capacity and provide specialized surface coatings for more complex requirements.

By embracing a future-focused manufacturing approach, we deliver a complete production solution—from casting to fully finished, ready-to-install components—ensuring quality, reliability, and seamless integration for our customers.



Materials / technical parameters

Ductile iron - according to DIN EN 1563 - Selection							
Letter Symbol	Material Number	Gauranteed Properties on sparately cast text specimens*					
		Daimeter of the tensile test specimen MM	Tensil Strength Rm N/mm²	0.2 -% Yeild Strength N/mm²	Elongation at Rupture%	Brinell Hardness HB	Essential Structural Consituents
EN-GJS-400-15	5.3106	12	400	250	15	135-180	ferritic / pearlitic
EN-GJS-500-7	5.32	12	500	320	7	170-230	ferritic / pearlitic
EN-GJS-600-3	5.3201	12	600	380	3	200-250	pearlitic / ferritic
EN-GJS-700-2	5.33	12	700	420	2	235-285	predominantly pearlitic
EN-GJS-400-18-LT	5.3103	12	400	240	18	130-165	ferritic
EN-GJS-450-18	5.3108	12	450	350	18	170-200	ferritic
EN-GJS-500-14	5.3109	12	500	400	14	185-215	ferritic
EN-GJS-600-10	5.311	12	600	470	10	200-230	ferritic
*Particularly in case of wall thicknesses of more than 50mm and compact cast parts, we recommend agreements between the manufacturer and the consumer.							

Cast Iron with Lamellr Graphite - According to DIN EN 1561 - Selection					
Letter Symbol	Material Number	Gauranteed Properties on sparately cast text specimens*			
		Daimeter of the tensile test specimen MM	Tensil Strength Rm N/mm²	Brinell Hardness HB	Essential Structural Consituents
EN-GJL-150	5.1200	20	150-250	165-205	ferritic / pearlitic
EN-GJL-200	5.1300	20	200-300	185-225	ferritic
EN-GJL-250	5.1301	20	250-350	205-250	ferritic
EN-GJL-300	5.1302	20	300-400	225-270	ferritic
*Tensile Strength and Brinell Hardness in the cast part strongly depend on the wall thickness					

SAGAR[®]

An ISO 9001:2015 Company

Sagar Foundry Pvt. Ltd.

Survey No. 38/P, At. Ravki Village, Tal. : Lodhika,
Dist. Rajkot. Gujarat, India. Pin Code: 360 005

+91 9909008807

info@sagarfoundry.com

www.sagarfoundry.com

